



APEX PIPING

PRODUCT CATALOGUE

WHO WE ARE

WELCOME TO APEX PIPING SYSTEMS. CONNECT WITH FLOW.

The story began in 1978 when Apex Piping Systems Ltd, formerly known as KAP Plastics, was founded in Industrial Area in Nairobi, Kenya.

The company initially focused on the importation, marketing, and distribution of aluminum products, specializing in injection molded plastics and the production of household products such as plastic hangers, jugs, plates, and rubber door stoppers.

Encouraged by the parent company's sustained success in producing high quality steel, Apex Steel directors made the decision to acquire KAP Plastics, in 2010, effectively becoming a one-stop shop for all construction-related needs in Kenya. The company was later rebranded to Apex Piping Systems in 2018.

In 2004, Apex Piping became the first company in East Africa to make Poly Propylene Random (PPR) and High Density Polyethylene (HDPE) pipes, radically changing the plumbing industry from galvanized pipes to plastic, thus saving plumbers substantial time and money.

PPR, trademarked as 'Hydro-flo', is manufactured using only virgin materials, without any additives, making it the perfect fit for customers who are particular about quality and durability.

Hydro-Flo has been awarded KEBS certification and is the preferred choice for plumbers and contractors looking for quality and durability. It's manufactured from a virgin material with no fillers or additives, ensuring sustainability in quality and performance to last over 50 years.

Following Apex Piping's seamless integration into the Apex Steel family, the company has continued to be at the forefront of plumbing innovations, introducing a series of new plastic and piping solutions to the Kenyan market including round pipes, wall plugs, toilet seat covers, garden hose pipes, ferrules, and tubings.

The group's unwavering commitment to quality was eventually recognized by the Dutch-based global leader in piping and plumbing solutions, Wavin, leading to a partnership (from 2012 to 2017) that saw Apex Piping begin manufacturing PPR, PVC (drainage pipes, electrical conduits, pressure pipes, and rainwater downpipes) and HDPE pipes at its state of the art manufacturing facilities in Athi River under stringent quality measures and manufacturing direction from Wavin.

These pipes and fittings are marketed under the brand name **'Apex Piping'**.

Water is the essence of life and it should only be handled with the world's best piping solutions.

INDEX

DRINKING WATER

- PPR Hydro-flo
- UPVC pressure pipes
- HDPE
- UPVC Borehole Screens and Casings

WASTE WATER

- PVC Waste Pipes
- PE Soil and Waste

OTHER PRODUCTS

- Injection Moulded Products
- Extrusion Products
- Household Products

WATER

THE ESSENCE OF LIFE





PPR HYDRO-FLO



ABOUT THE PRODUCT

Polypropylene Random (PPR) pipes and fittings are most reliable in plumbing and water supply pipelines inside the building, due to their chemical features and fusion welding, which ensures the plumber has a perfect seal tight system.

The PPR type 3 used in the production of HYDRO-FLO PPR system has a high molecular weight and excellent creep resistance fundamental characteristics for the transportation of hot fluids under pressure. It also has good resilience which ensures ease of installation even with temperatures under 0°C. HYDRO-FLO pipes are made of 100% virgin material which guarantees they last long; durable and no deposits seen.

HYDRO-FLO PPR pipes are made to the standard KS-ISO 15874

APPLICATIONS

Pipe & Fitting Networks for:

- Cold & Hot installations, i.e. in Residences, Complexes, Apartments, Offices, Hospitals, Hotels, Schools etc.
- Industrial, i.e. transportation of corrosive fluids (like acids) and liquid foods etc.
- Agriculture and Horticulture.
- Compressed air plants.
- Swimming pools
- Rain Water harvesting and utilization systems.

PRODUCT SPECIFICATIONS

PN 20

Ø	Wall Thickness	I.D
20	3.4	13.2
25	4.2	16.6
32	5.4	21.2
40	6.7	26.6
50	8.3	33.4
63	10.5	42.0
75	12.5	50.0
90	15	60.0
110	18.3	73.4

PN 16

Ø	Wall Thickness	I.D
20	2.8	14.6
25	3.5	18.2
32	4.4	23.2
40	5.5	29.0
50	6.9	36.2
63	8.6	45.4
75	10.3	54.6
90	12.3	65.4
110	15.1	79.8



PPR FITTINGS

90° TEE



RANGE (MM)
20 - 110

45° ELBOW



RANGE (MM)
20 - 110

T-FITTING



RANGE (MM)
20 - 110

REDUCED "T" FITTING



RANGE (MM)
20 - 110

REDUCER MALE/FEMALE



RANGE (MM)
20 - 110

MALE THREADED 90° ELBOW



RANGE (MM)
20 - 32

FEMALE THREADED 90° ELBOW



RANGE (MM)
20 - 63

MALE THREADED "T" FITTING



RANGE (MM)
20 - 32

FEMALE THREADED 90° MALE ELBOW

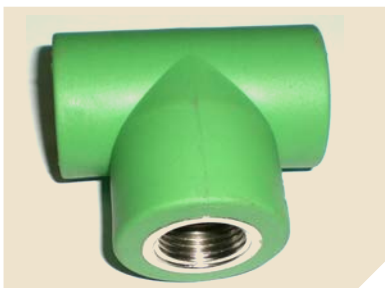


RANGE (MM)
20 - 25



PPR FITTINGS

FEMALE THREADED "T" FITTING



RANGE (MM)
20 - 63

MALE ADAPTOR



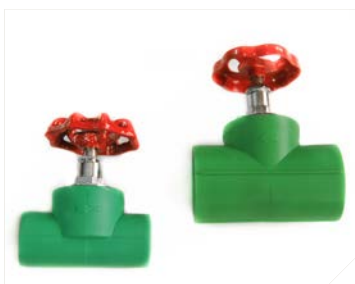
RANGE (MM)
20 - 75

COUPLING



RANGE (MM)
20 - 110

BALL VALVE WALL RECESSED TYPE



Ø	L
20	90.5
20	93.5
32	93.5

BALL VALVE WALL RECESSED TYPE



Ø	L
20	84
25	89
32	89

CROSS-OVER PIPE



Specifications Size
1/2"
3/4"
1"
1 1/4"

SHUT OFF VALVE WALL RECESSED TYPE, PPR WELDING MACHINE



RANGE (MM)
32 - 110

PIPE CUTTERS FOR PPR



Ø	
32	cast iron
110	steel body



UPVC PRESSURE PIPES



ABOUT THE PRODUCT

UPVC pressure pipes are manufactured to KS - ISO 1452 and EN 1452 standards incorporating the traditional design stress of 10 and 12.5 Mpa respectively. The pipes are manufactured with a socketed-end and supplied complete with a pressure lock rubber seal for a superior joint. The product is ideally suited for applications in both pumping and gravity design.

APPLICATIONS

The PVC-U pressure pipes and fittings from Apex Water are suitable for the following applications:

- Potable Water Distribution Systems
- Industrial Process Pipelines
- Pressure Sewer
- Effluent Pipelines
- Slurry Pipelines
- Irrigation And Watering Systems

SYSTEM BENEFITS

Rubber rings

Apex PVC pipes comply to the EN 681 - 1 standard whereas they come with EPDM rubber seal.

High reliability and proven service performance

PVC-U pipes and fittings are the preferred piping material world-wide for potable water supply and distribution pipes.

Complete plastic system

Extensive range of pipes and fittings.

Smooth bore, free from incrustations

Maintaining a smooth internal surface, preventing the build-up of deposits. Minimum maintenance required.

Corrosion resistant

Durable and complete plastic system with smooth internal bore.

Light weight

Which makes it easy to handle and install, resulting in reduced laying costs.

Reliable and durable

Both, the easy rubber ring push-fit system and solvent cement ensure a tight and durable connection.

Safe for potable water supply

PVC-U is proven to be one of the most reliable and safe piping materials for potable water.

Effective rubber ring seal joint

Reduced jointing effort and improved reliability.

High chemical resistance

Apex PVC-U pressure pipes and fittings are resistant to a great number of chemical agents.

Special projects

A specialised team within Apex Water is dedicated to supplying all required products for large-scale pipe projects; Apex Water's own products can be combined with those of other manufacturers to supply a complete package to the customer. This team is experienced in arranging very large quantities of product "right on time" to complex construction projects. Upon request technical advice and training can be offered by Apex Water experts to assist in these projects.

Licensing

Apex PVC pressure pipes are manufactured under license from Wavin.



UPVC PRESSURE PIPES

PRODUCT SPECIFICATIONS

Nominal Outside Diameter	Pipe series S						
	Nominal (minimum) Wall thickness						
	S 20 (SDR 41)	S 16 (SDR 33)	S 12,5 (SDR 26)	S 10 (SDR 21)	S 8 (SDR 17)	S 6,3 (SDR 13,6)	S 5 (SDR 11)
	Nominal Pressure PN based on design coefficient C=2,5						
	PN 6	PN 8	PN 10	PN 12,5	PN 16	PN 20	
12	-	-	-	-	-	-	1,5
16	-	-	-	-	-	-	1,5
20	-	-	-	-	-	1,5	1,9
25	-	-	-	-	1,5	1,9	2,3
32	-	1,5	1,6	1,6	1,9	2,4	2,9
40	1,5	1,6	1,6	1,9	2,4	3,0	3,7
50	1,6	2,0	2,0	2,4	3,0	3,7	4,6
63	2,0	2,5	2,5	3,0	3,8	4,7	5,8
75	2,3	2,9	2,9	3,6	4,5	5,6	6,8
90	2,8	3,5	3,5	4,3	5,4	6,7	8,2
	Nominal Pressure PN based on design coefficient C=2,0						
	PN 6	PN 8	PN 10	PN 12,5	PN 16	PN 20	PN 25
110	2,7	3,4	4,2	5,3	6,6	8,1	10,0
125	3,1	3,9	4,8	6,0	7,4	9,2	11,4
140	3,5	4,3	5,4	6,7	8,3	10,3	12,7
160	4,0	4,9	6,2	7,7	9,5	11,8	14,6
180	4,4	5,5	6,9	8,6	10,7	13,3	16,4
200	4,9	6,2	7,7	9,6	11,9	14,7	18,2
225	5,5	6,9	8,6	10,8	13,4	16,6	-
250	6,2	7,7	9,6	11,9	14,8	18,4	-
280	6,9	8,6	10,7	13,4	16,6	20,6	-
315	7,7	9,7	12,1	15,0	18,7	23,2	-
355	8,7	10,9	13,6	16,9	21,1	26,1	-
400	9,8	12,3	15,3	19,1	23,7	29,4	-
450	11,0	13,8	17,2	21,5	26,7	33,1	-
500	12,3	15,3	19,1	23,9	29,7	36,8	-
560	13,7	17,2	21,4	26,7	-	-	-
630	15,4	19,3	24,1	30,0	-	-	-
710	17,4	21,8	27,2	-	-	-	-
800	19,6	24,5	30,6	-	-	-	-
900	22,0	27,6	-	-	-	-	-
1000	24,5	30,6	-	-	-	-	-



UPVC PRESSURE FITTINGS



ELBOW 90°

SIZES

1/2"
3/4"
1"
1 1/2"
2"
3"



TEE EQUAL

SIZES

1/2"
3/4"
1"
1 1/2"
2"
3"



VALVE SOCKET/MTA

SIZES

1/2"
3/4"
1"
1 1/2"
2"



Y-TEE

SIZES

1/2"
3/4"
1"
1 1/2"
2"



REDUCING SOCKET

SIZES

3/4" x 1/2"
1" x 3/4"
1 1/2" x 1"
2" x 1 1/2"



REDUCING BUSH

SIZES

3/4" x 1/2"
1" x 3/4"
1 1/2" x 1"
2" x 1 1/2"



FEMALE THREADED ADAPTOR

SIZES

1/2" x 1/2"
3/4" x 1/2"
3/4" x 3/4"
1" x 1"
1 1/2" x 1 1/2"
2" x 2"

WATER

THE ESSENCE OF LIFE





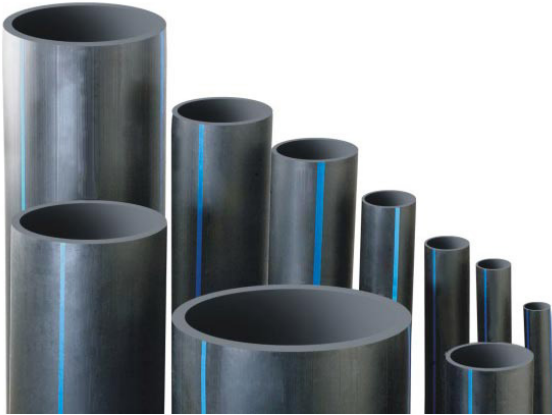
HDPE PIPES

PRODUCT SPECIFICATION

Pipe series												
SDR 6		SDR 7,4		SDR 9		SDR 11		SDR 13,6		SDR 17		
S 2,5		S 3,2		S 4		S 5		S 6,3		S 8		
Nominal pressure (PN) ^a bar												
PE 100	—		PN 25		PN 20		PN 16		PN 12,5		PN 10	
Nominal size	Wall thicknesses ^b mm											
	e _{min}	e _{max}	e _{min}	e _{max}	e _{min}	e _{max}	e _{min}	e _{max}	e _{min}	e _{max}	e _{min}	e _{max}
16	3,0	3,4	2,3 ^c	2,7	2,0 ^c	2,3	—	—	—	—	—	—
20	3,4	3,9	3,0	3,4	2,3 ^c	2,7	2,0 ^c	2,3	—	—	—	—
25	4,2	4,8	3,5	4,0	3,0	3,4	2,3 ^c	2,7	2,0 ^c	2,3	—	—
32	5,4	6,1	4,4	5,0	3,6	4,1	3,0	3,4	2,4	2,8	2,0 ^c	2,3
40	6,7	7,5	5,5	6,2	4,5	5,1	3,7	4,2	3,0	3,5	2,4	2,8
50	8,3	9,3	6,9	7,7	5,6	6,3	4,6	5,2	3,7	4,2	3,0	3,4
63	10,5	11,7	8,6	9,6	7,1	8,0	5,8	6,5	4,7	5,3	3,8	4,3
75	12,5	13,9	10,3	11,5	8,4	9,4	6,8	7,6	5,6	6,3	4,5	5,1
90	15,0	16,7	12,3	13,7	10,1	11,3	8,2	9,2	6,7	7,5	5,4	6,1
110	18,3	20,3	15,1	16,8	12,3	13,7	10,0	11,1	8,1	9,1	6,6	7,4
125	20,8	23,0	17,1	19,0	14,0	15,6	11,4	12,7	9,2	10,3	7,4	8,3
140	23,3	25,8	19,2	21,3	15,7	17,4	12,7	14,1	10,3	11,5	8,3	9,3
160	26,6	29,4	21,9	24,2	17,9	19,8	14,6	16,2	11,8	13,1	9,5	10,6
180	29,9	33,0	24,6	27,2	20,1	22,3	16,4	18,2	13,3	14,8	10,7	11,9
200	33,2	36,7	27,4	30,3	22,4	24,8	18,2	20,2	14,7	16,3	11,9	13,2
225	37,4	41,3	30,8	34,0	25,2	27,9	20,5	22,7	16,6	18,4	13,4	14,9
250	41,5	45,8	34,2	37,8	27,9	30,8	22,7	25,1	18,4	20,4	14,8	16,4
280	46,5	51,3	38,3	42,3	31,3	34,6	25,4	28,1	20,6	22,8	16,6	18,4
315	52,3	57,7	43,1	47,6	35,2	38,9	28,6	31,6	23,2	25,7	18,7	20,7
355	59,0	65,0	48,5	53,5	39,7	43,8	32,2	35,6	26,1	28,9	21,1	23,4
400	—	—	54,7	60,3	44,7	49,3	36,3	40,1	29,4	32,5	23,7	26,2
450	—	—	61,5	67,8	50,3	55,5	40,9	45,1	33,1	36,6	26,7	29,5
500	—	—	—	—	55,8	61,5	45,4	50,1	36,8	40,6	29,7	32,8
560	—	—	—	—	62,5	68,9	50,8	56,0	41,2	45,5	33,2	36,7
630	—	—	—	—	70,3	77,5	57,2	63,1	46,3	51,1	37,4	41,3



HDPE PIPES



ABOUT THE PRODUCT

Apex manufactures HDPE pipes which are available in various sizes. These are suitable to work under different working pressure for both residential and industrial purposes. Manufactured as per KS-ISO 4427.

- Available from size 25mm to 800mm
- Corrosion resistant
- Leak proof
- Light in weight.

PRODUCT SPECIFICATION

Application ¹⁾	Dimensions (OD) mm ²⁾			
	PN 6	PN 10	PN 16	PN 25
Water, Industrial	-	ø 32 - 800	ø 20 - 800	ø 16 - 450
Gas ³⁾	ø 16 - 630	ø 20 - 500	-	-
Pressure sewer	ø 90 - 800	ø 50 - 630	-	-

METHODS OF JOINING

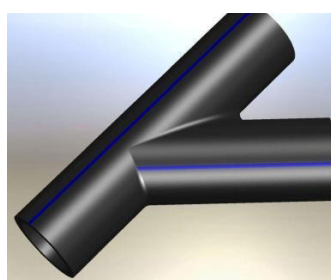
1. COMPRESSION FITTING



2. ELECTROFUSION



3. BUTTFUSION



4. MECHANICAL JOINT



HDPE COMPRESSION FITTINGS



ABOUT THE PRODUCT

Polypropylene (PP) Compression fittings are approved for use in contact with drinking water. These fittings offer exceptional joint security for metric OD polyethylene (PE) pipes and form a seal without distorting the pipe or restricting the pipe bore. The PP Compression fittings range is suitable for potable water distribution mains and irrigation systems

PRODUCT SPECIFICATION

Joints Body: black Polypropylene
 Lock-nut: blue Polypropylene (RAL 5012)
 Gasket: 75 Shore (NBR) nitric rubber
 Locking ring: white polyacetale
 Reinforced rings: Stainless steel AISI 430
 Clamp Saddles Body and gasket: same as the joints.

COUPLING



Size (mm)
16
20
25
32
40
50
63
75
90
110

FLANGED JOINT WITH METAL FLANGE



Size (mm)
50
63
75
90
110

FEMALE ADAPTOR



Size (mm)
16
20
25
32
40
50
63
75
90
110



HDPE COMPRESSION FITTINGS

45° ELBOW WITH THREADED MALE OFFTAKE



Size(mm)

25
32
40
50
63
120

END CAP



Size (mm)

16
20
25
32
40
50
63
75
90
110

90° REDUCING ELBOW



Size(mm)

20 - 15
25 - 20

MALE ADAPTOR WITH THREADED METAL-GI



Size(mm)

20
25
32
40
50
63

MALE ADAPTOR WITH THREADED METAL-BRASS



Size(mm)

20
25
32
40
50
63

45° ELBOW



Size(mm)

20
25
32
40
50
63

FEMALE ADAPTOR WITH METAL OFFTAKE (BRASS)



Size (mm)

20
25
32
40
50
63

90° MALE ELBOW WITH THREADED METAL (NICKELED BRASS)



Size(mm)

20
25
32
40

FEMALE ADAPTOR WITH METAL-(NICKELED BRASS)



Size(mm)

20
25
32
40
50
63

BLANKING PLUG



Size (mm)

20
25
32
40
50

METAL TIGHTENING WRENCH



Size(mm)

16 - 32
40 - 63
75 - 110

90° MALE ELBOW WITH THREADED METAL (BRASS)



Size(mm)

20
25
32
40
50
63



HDPE COMPRESSION FITTINGS

90° TEE



Size

16
20
25
32
40
50
63
75
90
110

REPAIRING COUPLING (WITHOUT PIPE STOP)



Size

120
25
32
40
50
63
75
90
110

MALE ADAPTOR



Size

16
20
25
32
40
50
63
75
90
110

90° TEE WITH THREADED FEMALE OFFTAKE



Size

16
20
25
32
40
50
63
75
90
110

90° REDUCING-INCREASING TEE



Size

20 - 16 - 20
20 - 25 - 20
25 - 20 - 25
25 - 32 - 25
32 - 25 - 32
40 - 32 - 40
50 - 32 - 50
50 - 40 - 50
63 - 32 - 63
63 - 50 - 63

REDUCING COUPLING



Size

20 - 16
25 - 16
25 - 20
32 - 20
32 - 25
40 - 25
40 - 32
50 - 32
50 - 40
63 - 50
110 - 90

90° ELBOW WITH THREADED FEMALE OFFTAKE



Size

16
20
25
32
40
50
63
75
90
110

90° ELBOW WITH THREADED MALE OFFTAKE



Size

16
20
25
32
40
50
63
75
90
110

90° ELBOW



Size

16
20
25
32
40
50
63
75
90
110



ELECTRO FUSION FITTINGS



ABOUT THE PRODUCT

The PE pressure pipe fittings supplied by Wavin meet all requirements in accordance with the respective EN and ISO standards for water and gas applications, respectively: EN 12201-3, ISO 4427 and EN1555-3, ISO 4437. Rigorous testing and quality control throughout the entire production process ensure the reliability of the fittings.

APPLICATIONS

The Wavin fitting range is suitable for all sorts of applications in combination with PE pressure pipelines. The Wavin electro-fusion fittings are all-round compatible with the majority of the (40V) fusion machines in the market.

Size

Coupler E+ PE100 SDR11 d20
 Coupler E+ PE100 SDR11 d25
 Coupler E+ PE100 SDR11 d32
 Coupler E+ PE100 SDR11 d40
 Coupler E+ PE100 SDR11 d50
 Coupler E+ PE100 SDR11 d63
 Coupler E+ PE100 SDR11 d75
 Coupler E+ PE100 SDR11 d90
 Coupler E+ PE100 SDR11 d110
 Coupler E+ PE100 SDR11 d125
 Coupler E+ PE100 SDR11 d140
 Coupler E+ PE100 SDR11 d160
 Coupler E+ PE100 SDR11 d180
 Coupler E+ PE100 SDR11 d200

Size

T 90° Equal E+ PE100 SDR11 d75
 T 90° Equal E+ PE100 SDR11 d90
 T 90° Equal E+ PE100 SDR11 d110
 T 90° Equal E+ PE100 black SDR11 d125
 T 90° Equal E+ PE100 SDR11 d160
 T 90° Equal E+ PE100 SDR11 d180
 T 90° Equal E+ PE100 SDR11 d200

Size

Elbow 90° E+ PE100 SDR11 d20
 Elbow 90° E+ PE100 SDR11 d25
 Elbow 90° E+ PE100 SDR11 d32
 Elbow 90° E+ PE100 SDR11 d40
 Elbow 90° E+ PE100 SDR11 d50
 Elbow 90° E+ PE100 SDR11 d63
 Elbow 90° E+ PE100 SDR11 d75
 Elbow 90° E+ PE100 SDR11 d90
 Elbow 90° E+ PE100 SDR11 d110
 Elbow 90° E+ PE100 SDR11 d125
 Elbow 90° E+ PE100 SDR11 d160
 Elbow 90° E+ PE100 SDR11 d180
 Elbow 90° E+ PE100 SDR11 d200

Size

Reducer E+ PE100 SDR11 d25-20
 Reducer E+ PE100 SDR11 d32-20
 Reducer E+ PE100 SDR11 d32-25
 Reducer E+ PE100 SDR11 d40-20
 Reducer E+ PE100 SDR11 d40-25
 Reducer E+ PE100 SDR11 d40-32
 Reducer E+ PE100 SDR11 d50-32
 Reducer E+ PE100 SDR11 d50-40
 Reducer E+ PE100 SDR11 d63-32
 Reducer E+ PE100 SDR11 d63-40
 Reducer E+ PE100 SDR11 d63-50
 Reducer E+ PE100 SDR11 d90-63
 Reducer E+ PE100 SDR11 d110-90
 Reducer E+ PE100 SDR11 d160-110
 Reducer E+ PE100 SDR11 d180-125
 Reducer E+ PE100 SDR11 d125-90
 Reducer E+ PE100 SDR11 d200-160





SADDLE CLAMPS AND MECHANICAL JOINTS



ABOUT THE PRODUCT

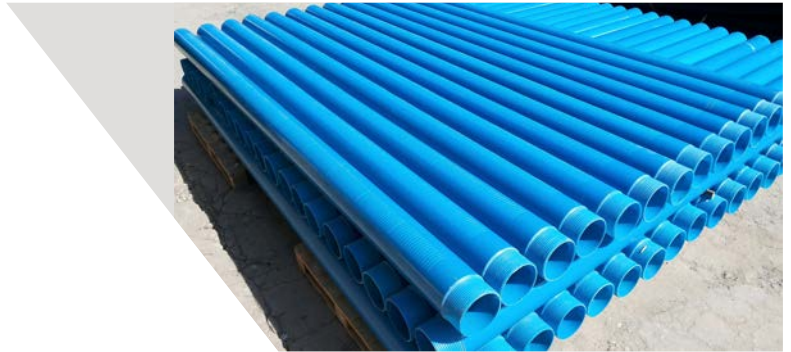
Polypropylene (PP) Compression fittings are approved for use in contact with drinking water. These fittings offer exceptional joint security for metric OD polyethylene (PE) pipes and form a seal without distorting the pipe or restricting the pipe bore. The PP Compression fittings range is suitable for potable water distribution mains and irrigation systems. Fittings suitable for drinking water according to standards and regulations currently in force in Italy (Circolare n. 102 dated 2/2/1978 from Ministry of Health), Germany (Mitteilungen aus dem Bundesgesundheitsamt, 108. / 109. Mitteilung), United Kingdom (WRC), Netherlands (KIWA), USA (NSF).



Specifications Size	Specifications Size	Specifications Size	Specifications Size	Specifications Size
25 x 1/2 "	63 x 1/ "	90 x 1/2 "	110 x 2"	200 x 2 - pn 10
25 x 3/4 "	63 x 3/4 "	90 x 3/4 "	110 x 3"	200 x 3 - pn 10
32 x 1/2 "	63 x 1"	90 x 1"	160 x 1/2 "	200 x 4 - pn 10
32 x 3/4"	63 x 1 1/2 "	90 x 1 1/4"	160 x 3/ "	225 x 1 1/2 - pn 10
32 x 1"	63 x 1 1/2 "	90 x 1 1/2 "	160 x 1"	225 x 2 - pn 10
40 x 1/2"	75 x 1/2"	90 x 2"	160 x 1 1/4 "	225 x 3 - pn 10
40 x 3/4"	75 x 3/4 "	110 x 1/2"	160 x 1 1/2 "	225 x 4 - pn 10
40 x 1"	75 x 1"	110 x 3/4 "	160 x 2"	250 x 2 - pn 10
50 x 1/2"	75 x 1 1/4 "	110 x 1"	160 x 3" - pn 10	250 x 3 - pn 10
50 x 3/4"	75 x 1 1/2"	110 x 1 1/4 "	160 x 4" - pn 10	250 x 4 - pn 10
50 x 1"	75 x 2"	110 x 1 1/2"	200 x 1 1/2 " - pn 10	280 x 2 - pn 10
50 x 1 1/4"				280 x 3 - pn 10
				280 x 4 - pn 10
				315 x 2 - pn 10
				315 x 3 - pn 10
				315 x 4 - pn 10



UPVC BOREHOLE SCREEN AND CASINGS



ABOUT THE PRODUCT

UPVC borehole casings are manufactured to standard KS-2210 and DIN 4925 with trapezoidal threads and female belled-ends. The male threaded ends can also be fitted with a rubber O-ring for a superior leak-free joint if required to ensure that every drop of ground water that enters the well has been extracted at the greatest possible depth.

SYSTEM BENEFITS

- Corrosion: the chemical inertness of uPVC makes them insensitive to all forms of corrosion, thus making them excellent products for use in Acid Mine drainage wells or high PH applications
- Mechanical properties: excellent resistance to high collapse pressures, together with high tensile loads with the "DIN" threading.
- Accurate slot sizes: with our various slotting machines we are able to produce accurate slot sizes which are consistent and therefore easily matched up to calculated flow rates which designers can use when designing systems
- Cost effective: lower installed cost compared to conventional (steel) casings.
- Reliable: the trapezoidal threaded joints can be used for over 20 years in demanding conditions.
- Easy handling and installation: tough, rugged material, with easy to assemble joints.
- Light weight: much lighter than steel casings makes for user friendly installations and savings

in time.

- PVC plastic material: resistant to corrosion as well as acids and alkalis found in some soils. No additional protection required.
- Internally and externally flush jointed: easy installation in borehole and improved flow of pumped water.
- High modulus of elasticity: makes for stiffer casings and screens which can be designed for boreholes up to at least 200 m deep.
- Can be solvent welded

APPLICATIONS

- Waterwells
- Mine dewatering
- Sea water abstraction
- Geotechnical drilling
- Water monitoring



UPVC BOREHOLE SCREEN AND CASINGS

PRODUCT SPECIFICATIONS

	TYPE OF		WALL THICK-	THREAD DEPTH	THREAD PITCH	- ARD SLOT WIDTH	APPROX AREA OF WITH STD SLOT WIDTH	DIAMETER OVER SOCKET
BELLED END DIN 4925 CASE	B	113	5.0	2.0	6.0	-	-	121
BELLED END DIN 4925 SCREEN		113	5.0	2.0	6.0	0.8 - 1.0	8.0	121
FLUSH FITTING DIN 4925 CASE	C	113	7.0	2.0	6.0	-	-	
FLUSH FITTING DIN 4925 SCREEN	B	113	7.0	2.0	6.0	0.8 - 1.0	8.0	
BELLED END DIN 4925 CASE	C	125	5.0	2.0	6.0	-	-	132
BELLED END DIN 4925 SCREEN	B	125	5.0	2.0	6.0	0.8 - 1.0	7.5	132
FLUSH FITTING DIN 4925 CASE	C	125	7.5	2.0	6.0	-	-	
FLUSH FITTING DIN 4925 SCREEN	B	125	7.5	2.0	6.0	0.8 - 1.0	7.5	
BELLED END DIN 4925 CASE	C	140	6.5	2.6	6.0	-	-	149
BELLED END DIN 4925 SCREEN	B	140	6.5	2.6	6.0	0.8 - 1.0	7.5	149
FLUSH FITTING DIN 4925 CASE	C	140	8.0	2.6	6.0	-	-	
FLUSH FITTING DIN 4925 SCREEN	B	140	8.0	2.6	6.0	0.8 - 1.0	7.5	
BELLED END DIN 4925 CASE	C	165	7.5	2.6	6.0	-	-	176
BELLED END DIN 4925 SCREEN	B	165	7.5	2.6	6.0	0.8 - 1.0	7.5	176
FLUSH FITTING DIN 4925 CASE	C	165	9.5	2.6	6.0	-	-	
FLUSH FITTING DIN 4925 SCREEN	B	165	9.5	2.6	6.0	0.8 - 1.0	7.5	
BELLED END DIN 4925 CASE	C	200	9.0	2.6	6.0	-	-	212
BELLED END DIN 4925 SCREEN	B	200	9.0	2.6	6.0	0.8 - 1.0	7.5	212
FLUSH FITTING DIN 4925 CASE	C	200	11.5	2.6	6.0	-	-	
FLUSH FITTING DIN 4925 SCREEN	B	200	11.5	2.6	6.0	0.8 - 1.0	7.5	
BELLED END DIN 4925 CASE	C	225	10.0	2.6	6.0	-	-	241
BELLED END DIN 4925 SCREEN	B	225	10.0	2.6	6.0	0.8 - 1.0	7.0	241
FLUSH FITTING DIN 4925 CASE	C	225	13.0	2.6	6.0	-	-	
FLUSH FITTING DIN 4925 SCREEN	B	225	13.0	2.6	6.0	0.8 - 1.0	7.0	
BELLED END DIN 4925 CASE	C	280	12.5	4.5	12.0	-	-	297
BELLED END DIN 4925 SCREEN	B	280	12.5	4.5	12.0	1.5 - 1.7	7.0	
FLUSH FITTING DIN 4925 CASE	C	280	16.0	4.5	12.0	-	-	
FLUSH FITTING DIN 4925 SCREEN	B	280	16.0	4.5	12.0	1.5 - 1.7	7.0	



WATER
THE ESSENCE OF LIFE



PVC WASTE AND DRAINAGE PIPES



ABOUT THE PRODUCT

Apex PVC pipes are optimally used in residential and industrial discharge systems for soil, waste and vent applications. Apex offers multiple complete PVC soil and waste systems, which comply with all major standards, offering mechanical engineers and plumbers all possible solutions.

1. Soil and waste standard KS-ISO 3633
2. Drainage standard KS-ISO 1452

SYSTEM BENEFITS

Complete plastic system

Extensive range of PVC pipes and fittings.

Good chemical and corrosion resistance

Apex PVC offers a considerable resistance to a large number of chemical agents up to 60° C for continuous and 90° C for discontinuous discharge.

Light weight

The APEX PVC system is lightweight yet strong. The weight is approximately one-sixth the weight of steel.

Easy to install

The low weight of the system reduces transportation,

handling and installation costs. The systems require no specific tools for cutting and are jointed with solvent weld or rubber ring push fit.

Reliable and durable

Whether using the easy rubber ring push fit system or solvent cement, APEX PVC is highly durable with high tensile and high impact strength.

Smooth interior, free of incrustations

The smooth interior of APEX PVC pipes and fittings prevents the buildup of deposits, assuring low friction loss and high flow rates. These high flow rates continue for the life of the pipe system.

Fire resistance classification

PVC pipes and fittings are classed as self-extinguishing and do not support combustion.

Cost effective

The many advantages of APEX PVC ensure a lower installed cost compared to other piping systems.

Maintenance free

APEX PVC pipes and fittings do not rust, corrode or promote build-up of deposits on the system interior.



PVC WASTE AND DRAINAGE PIPES

APPLICATIONS

The APEX PVC systems are used across the continent for all soil, waste and vent applications in residential and industrial buildings:

- Sanitary facilities
- Washing machines and dishwashers
- Waste water (laundries, industrial plants, etc)
- Aggressive fluids in schools, laboratories and industrial buildings.

Brand	Joining Method	Sizes(mm)
APEX PVC	Rubber Ring/Solvent Weld	32-450
Accessories	<ul style="list-style-type: none"> • WC Connectors • Vent pipes and caps • Air admittance valves • Traps/siphons • Floor gullies • Access fittings • Connectors and reducers 	

PRODUCT SPECIFICATIONS

Raw material	- Polyvinyl chloride (PVC)
Stabilizers	- Non-lead/ Organic
Joining method	- Rubber ring or Solvent Weld
Density (g/cm ³)	- 1.40
Yield strength (N/mm ²)	- 50 – 55
E-modulus (N/mm ²)	- 3000
Melting point	- Ca. 90°C
Vicat softening point	- 80°C
Specific heat	- 1.00 kJ/kg • K
Coefficient of heat conduction	- 0.16 W/mK



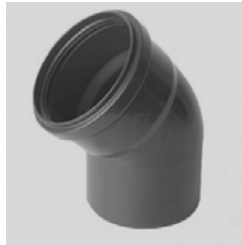
PVC WASTE FITTINGS



BEND 90° - SWR

Sizes

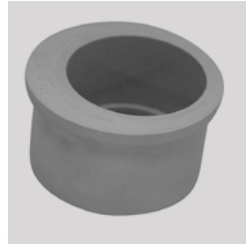
1 1/4"
1 1/2"
2"
3" (82mm)



BEND 45° - SWR

Sizes

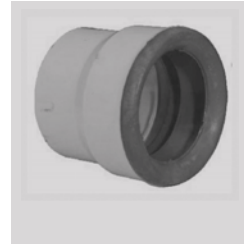
4" (110mm)
Bend 45°



REDUCING BUSH - SWR

Sizes

1 1/4"
1 1/2"
2"
3" (82mm)



W.C. CONNECTOR - SWR

Sizes

W.C. Connector
Straight 4" (110mm)



SHOWER TRAP - SWR

Sizes

4" (110mm) Tee



BOSS CONNECTOR - SWR

Sizes

4" (110mm) x 1 1/4"
4" (110mm) x 1 1/2"
4" (110mm) x 2"



FLOOR TRAP - SWR

Description

Complete with Grill and Tile
Grill and Tile (inlet)
Main Trap
Grill



INSPECTION BEND 90° - SWR

Sizes

4" (110mm) Inspection
Bend 90°



VENT COWL - SWR

Description

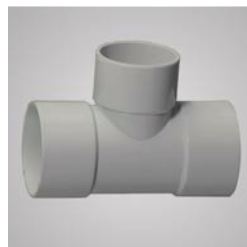
4" (110mm)



ACCESS PLUG - SWR

Sizes

1 1/4"
1 1/2"
2"



TEE SWR

Sizes

1 1/4"
1 1/2"
2"
3" (82mm)



TEE SWR

Sizes

4" (110mm) Tee



INSPECTION TEE

Sizes

4" (110mm) Bend 90°



PE SOIL AND WASTE



ABOUT THE PRODUCT

Wavin PE is a complete soil, waste and vent system of pipes and fittings, manufactured from high-density polyethylene. This tough and durable PE system offers an extraordinary chemical resistance in combination with a high flexibility level and great impact resistance. Wavin PE pipes and fittings are joined by welding, making the joints resistant to tension. There are two methods of welding: butt welding (hot plate welding) and electro-fusion welding.

SYSTEM BENEFITS

Excellent chemical and corrosion resistance

Durable system with a wide range of applications

High material flexibility

Options for rigid and flexible installation methods

High impact resistance

Impact resistance is high even at low temperatures.

Easy to install

Fittings are marked for easy cutting and positioning

Corrosion resistant

Wavin PE is a durable, complete plastic system.

Smooth bore, free of incrustations

Maintains a smooth internal surface, preventing the build-up of deposits which could restrict flow.

Welded system

Secure joints by butt-welding or electro-fusion welding.

Excellent for casting into concrete

Single system with a wide range of applications.

APPLICATION

The Wavin PE range for soil, waste and vent pipes and fittings is suitable for the following applications in residential and industrial buildings:

- Sanitary facilities
- Washing machines and dishwashers
- Waste water in commercial kitchens, laundries and industrial plants
- Aggressive fluids in schools, laboratories and industrial buildings.

Most Wavin PE products can also be used as part of under-pressure installations like the siphonic



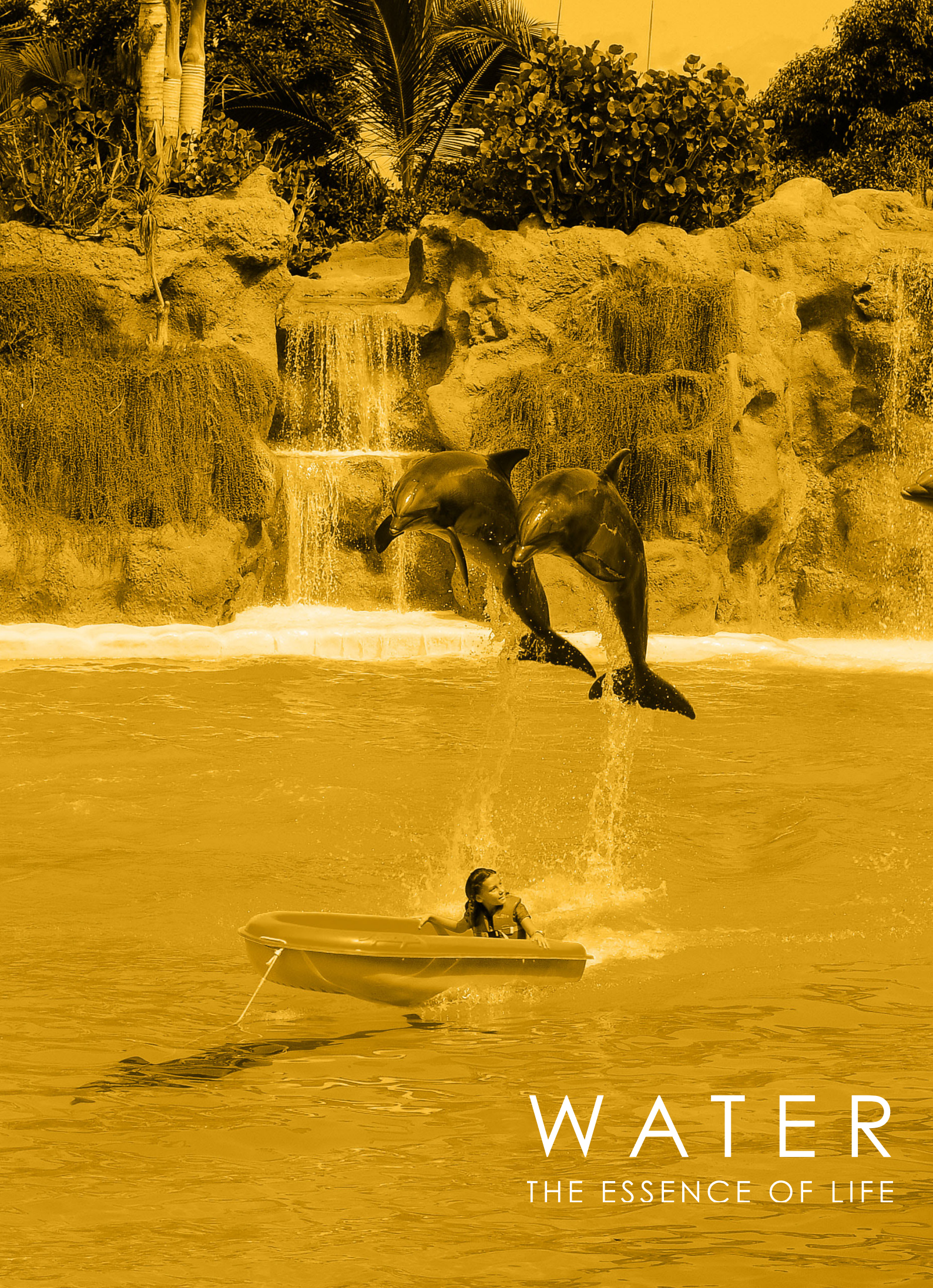
PE SOIL AND WASTE

roof drainage system Wavin QuickStream. To meet this requirement these items are designed to meet a PN4 pressure classification and are structurally stronger than those offered in other PE Soil and Waste systems.

RANGE

Wavin PE is available in a range of nominal pipe sizes from 32-315 mm. The system consists of a large variety of fittings / electro-fusion couplers e.g. reducers, elbows, branches, expansion sockets, access fittings and many other products.

Category	Product (mm)	Dimensions
Pipes	<ul style="list-style-type: none"> Plain ended 	32 - 315
Bends	<ul style="list-style-type: none"> Bends Bends extended Bends reduced U-bend 	15° - 90° 32 - 315
Branches	<ul style="list-style-type: none"> Branches Corner branches Double branches Y-branches Spherical branches 	45°, 67°, 87° 32/32 - 315/315
Couplers	<ul style="list-style-type: none"> Electro-fusion coupler (WaviDUO, Wavin SOLO) Connection with 4 stubs 	40 - 315 110/40 - 110/50
Reducers	<ul style="list-style-type: none"> Reducers concentric and eccentric) 	40/32 - 315/250
Accessories	<ul style="list-style-type: none"> Electro-fusion welding machines Butt-welding machines Access fittings WC connectors Siphons / Traps Transition fittings External and concealed cisterns Wavin QuickStream roof outlets 	



WATER
THE ESSENCE OF LIFE



WATER THE ESSENCE OF LIFE



ELECTRICAL CONDUIT PIPES AND FITTINGS



ABOUT THE PRODUCT

Electrical Conduits are manufactured under strict quality control with latest technology. Electrical Conduits are best preferred for concealed wiring in houses, residential and commercial buildings, industries, traffic signals, street lighting etc.

UPVC Electrical Conduits have been preferred over other available resources due to varied salient features, key among them being that it is not a 'fire catalyst'.

Standard: KS04 -179

APPLICATION

Domestic: concealed wiring in houses, residential and commercial buildings.

Industrial: concealed wiring in plants

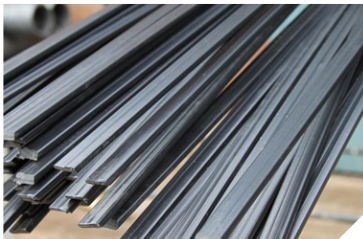
Other: Traffic signal connections, street light and wiring at public places

- Strong and durable
- Light weight and flexible
- Convenient joining
- Safe
- Resistant to rusting, wear, abrasion and water
- Excellent surface
- Cost saving
- Temperature stable
- Smoke suppressing
- Maintenance free

Sizes available: From 20mm to 50mm



INJECTION MOLDED PRODUCTS



PRODUCT

PACKING

PLASTIC CHAIR FERRULES

Round ferrule	external	5/8"	2500 pcs
Round ferrule	external	1/4"	2000 pcs
Round ferrule	external	7/8"	1200 pcs
Round ferrule	external	1"	1000 pcs
Round ferrule	external	1 1/4"	500 pcs
Round ferrule	insert	3/4"	2500 pcs
Round ferrule	insert	7/8"	2500 pcs
Round ferrule	insert	1"	1500 pcs
Round ferrule	insert	1 1/4"	1000 pcs

Wall plugs			
Wall plug		6mmx 1" red	1000 pcs
Wall plug		6mmx 1 1/4" red	1000 pcs
Wall plug		6mmx 1 1/2" red	1000 pcs
Wall plug		7mmx 1" yellow	1000 pcs
Wall plug		7mmx 1 1/2" yellow	1000 pcs
Wall plug		7mmx 1" yellow	1000 pcs
Wall plug		8mmx 1 1/2" green	1000 pcs
Wall plug		8mmx 2" green	1000 pcs
Wall plug		8mmx 1" red	1000 pcs
Wall plug expand		6mmx 1 1/4"	1000 pcs
Wall plug expand		8mmx 1 1/2"	1000 pcs
Wall plug expand		10mmx 2"	1000 pcs

TERRAZZO STRIPS

black	1/2" X 2mt	50 pcs
white	1/2" X 2mt	50 pcs
black	3/4" X 2mt	50 pcs
white	3/4" X 2mt	50 pcs
black	1" X 2mt	50 pcs
white	1" X 2mt	50 pcs

ROOFING WASHERS

R/washer dome shape	6mm black	3000 pcs
R/washer dome shape	6mm red	3000 pcs
R/washer dome shape	8mm black	3000 pcs
R/washer dome shape	8mm red	3000 pcs
R/washer with cap black		1000 pcs
R/washer with cap red		1000 pcs
R/washer and cap	6mm black	2000 pcs
R/washer and cap	6mm red	2000 pcs
R/washer and cap	6mm black	2000 pcs
R/washer and cap	6mm red	2000 pcs
R/washer for stud cap	8mm	3000 pcs
R/washer flat for nails		15000 pcs
Roofing stud cap		1000 pcs

OTHER PRODUCTS

Air vents black		100 pcs
Air vents brown		100 pcs
Air vents white		100 pcs
Plastic toilet roll holder		1 pc
Plastic soap dish		1 pc
Basic plug	1 1/2"	20 pcs



INJECTION MOLDED PRODUCTS



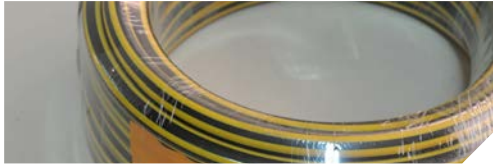
PRODUCT

PACKING

Basic plug	1 5/8"	20 pcs
Basic plug	1 3/4"	20 pcs
Basin stopper		20 pcs
"Kap" catch		100 pcs
Cupboard catch		20 pcs
Door stops	3/ 4" black	20pcs
Door stops	3/ 4"red	20pcs
Door stops	1" black	20pcs
Door stops	1" red	20pcs
Door stops	1 1/2" black	20pcs
Door stops	1 1/2" red	20pcs
Guide:key w741		200pcs
Guide:triangular		200pcs
Guide:vertical sliding {gaf}		100pcs
Guide:d341{gaf}		200pcs
Guide:08 series		200pcs
Guide:for x-trail		100pcs
Hose connector 1/2 "		50pcs
Hose connector 3/ 4"		50pcs
Knobs- plain		50pcs
Knobs-designed		50pcs
Mirror screw cap		500pcs
Mattex rollers	4mm	200pcs
Mattex rollers	6mm white	200pcs
Mattex rollers	6mm green	200pcs
Mop handlers		100pcs
Profile for g/house "u"		50pcs
Profile for g/house "o"		50pcs
Shovel handle		1pcs
Stationery tray		80pcs
Step nozzing		10mtrs
Skirting	4"	50mtrs
Sliding door rail stop end		100pcs
Sliding door rail guide white		100pcs
Sliding door rail "t" profile 2mtr		1 length
Slate panel	x3.8Mtr	1 length
Handle for paint tin - white/black		1000pcs
Strike plate,black /white		100pcs
Stud with nail for chair		200pcs
Door strip	1"	30mtrs
Table reading	1"	30mtrs
Cabinet handle	x100pcs	100pcs
Tile edge trim 9mmx 2.5Mtr		5length
Tile edge trim 12mmx 2.5Mtr		5 length
Tile spacers 2mmx250pcs		200pkts
Tile spacers 3mmx200pcs		80 pkts
Tile spacers 5mmx100pcs		100 pkts
Vent:duct x100pcs		100pcs
Vent:for alum.Window black		200pcs
Vent:for alum.Window grey		200pcs
Wheel barrow handle grip yellow		150pcs



EXTRUSION MOLDED PRODUCTS



PRODUCT

PACKING

PVC GARDEN HOSES

Garden hose zebra	1/2" x 60 ft
Garden hose zebra	1/2" x 120 ft
Garden hose zebra	3/4" x 60 ft
Garden hose zebra	3/4" x 120 ft
Garden hose zebra	1" x 60 ft
Garden hose zebra	1" x 120 ft
Garden hose clear	1/2" x 60 ft
Garden hose clear	1/2" x 120 ft
Garden hose clear	3/4" x 60 ft
Garden hose clear	3/4" x 120 ft
Garden hose clear	1" x 60 ft
Garden hose clear	1" x 120 ft

Nylon braided hoses

Nylon braided hose	1/4" x 50mts	50 mts
Nylon braided hose	5/16" x 50mts	50 mts
Nylon braided hose	3/8" x 50mts	50 mts
Nylon braided hose	1/2" x 50mts	50 mts
Nylon braided hose	5/8" x 50mts	50 mts
Nylon braided hose	3/4" x 50mts	50 mts
Nylon braided hose	1" x 50mts	50 mts
Nylon braided hose	1 1/4" x 30mts	50 mts
Nylon braided hose	1 1/2" x 30mts	50 mts
Nylon braided hose	2" x 30mts	50 mts

SUCTION/DELIVERY HOSES

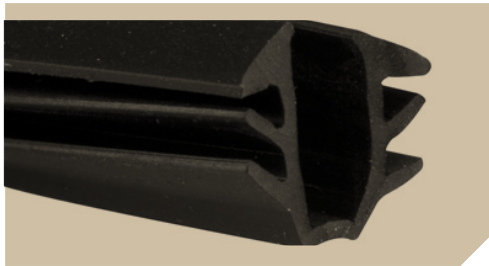
Suction hose	1"	} 6mts, 12Mts and 18 Mts
Suction hose	1 1/4"	
Suction hose	1 1/2"	
Suction hose	2"	
Suction hose	2 1/2"	
Suction hose	3"	
Suction hose	4"	
Suction hose	6"	
Delivery hose	1"	
Delivery hose	1 1/4"	
Delivery hose	1 1/2"	
Delivery hose	2"	
Delivery hose	2 1/2"	
Delivery hose	3"	
Delivery hose	4"	
Delivery hose	6"	

PVC CLEAR TUBING

Clear tubing	3mm	50 mts
Clear tubing	4mm	50 mts
Clear tubing	5mm	50 mts
Clear tubing	6mm	50 mts
Clear tubing	8mm	50 mts
Clear tubing	10mm	50 mts
Clear tubing	13mm	50 mts
Clear tubing	16mm	50 mts
Clear tubing	20mm	50 mts
Clear tubing	24mm	50 mts



EXTRUSION MOLDED PRODUCTS



PRODUCT

PACKING

PVC GLAZING VINYL

Profile 'xmas' tree	3.0Mm	50 mts
Profile 'xmas' tree	4.0Mm	50 mts
Profile 'xmas' tree	4.5Mm	50 mts
Profile 'xmas' tree	4.7Mm	50 mts
Profile 'xmas' tree	5.0Mm	50 mts
Profile 'xmas' tree	6.0Mm	50 mts
Profile 'xmas' tree	6.5Mm	50 mts
Profile 'u' tree	3mm	50 mts
Profile 'u' tree	4mm	50 mts
Profile 'u' tree	5mm	50 mts
Profile 'u' tree	6mm	50 mts
Profile ribbed solid	3.5Mm	100 mts
Profile ribbed hollow	5mm	50 mts
Partition filler black		25 mts
Partition filler gold		25 mts
Partition filler red		25 mts
Partition filler blue		25 mts
Partition filler brown		25 mts
Partition filler grey		25 mts
Partition filler met-blue		25 mts
Glass vinyl for matatu		50 mts
Profile hd o.E red/black		50 mts

OTHER PRODUCTS

Body filler centre large	50 mts
Body filler small - red	50 mts
Body filler small - black	50 mts
Body filler side - blue	50 mts
Body filler side - red	50 mts
Body filler side - yellow	50 mts
Body filler side - green	50 mts
Body filler side - black	50 mts

Table edging: "t"28mmx10mt black	10mtrs
Table edging: "t"28mmx10mt grey	10mtrs
Table edging: "t"28mmx10mt brown	10mtrs
Table edging: "t"28mmx10mt biege	10mtrs
Table edging: "t"30mmx10mt black	10mtrs
Table edging: "t"30mmx10mt grey	10mtrs
Table edging: "t"30mmx10mt blue	10mtrs
Table edging: "t"28mmx10mt blue	10mtrs
Table edging: rigid 20mm brown	50mtrs
Table edging: rigid 23mm black	50mtrs
Table edging: rigid 23mm grey	50mtrs
Table edging: rigid 23mm brown	50mtrs
Table edging: rigid 23mm beige	50mtrs
Table edging: rigid 29mm black	50mtrs
Table edging: soft 25mm black	50mtrs
Table edging: soft 22mm black	50mtrs
Table edging: soft 28mm black	50mtrs
Table edging: rigid 25mmx0.5Mm black	100mts
Tile edge trim 9mmx 2.5Mtr	5 length
Tile edge trim 12mmx 2.5Mtr	5 length



INJECTION MOLDED (HOUSEHOLD PRODUCTS)



PRODUCT

PACKING

Hangers		
Hangwell'	hanger "a"	240 pcs
Hangwell'	hanger "b"	240 pcs
Hangwell'	hanger "b"	50 pcs
Hangwell'	hanger "d"	144 pcs
Hangwell'	hanger "d"	350 pcs

HOUSEHOLD PRODUCTS

Magic bowl –	extra large	36 pcs
Magic bowl –	large	72 pcs
Magic bowl –	medium	96 pcs
Magic bowl –	small	100 pcs
Magic bowl –	extra small	200 pcs
Magic glass –	clear	500 pcs
Magic glass –	coloured	500 pcs
Magic glass –	tinted	500 pcs
Magic glass –	luminous	500 pcs
Magic jug –	clear	24 pcs
Magic jug –	coloured	24 pcs
Magic jug –	luminous	24 pcs
Magic jug –	tinted	24 pcs
Magic mug –	clear	216 pcs
Magic mug –	coloured	216 pcs
Magic soup plate –	clear	300 pcs
Magic soup plate –	coloured	300 pcs
Magic soup plate –	luminous	300 pcs
Magic soup plate –	tinted	300 pcs

Curtain trail	5mt length	1pc
Curtain rail fittings set		1set
Curtain rail fittings bracket		100pcs
Curtain rail fittings gliders		500pcs
Curtain rail fittings stop- ends		100pcs
Curtain hooks		80x150
Curtain hooks clip type		12x1000
Curtain hook round type		12x1000

Flower pot		1pc
Flower tube		500pcs
Flower tube cap		500pcs
Flower bed fence		10pktx10
Shower curtain ring "s" type		2000pcs
Shower curtain ring "c" type		2000pcs

Door wedge black		10pcs
Door wedge grey		10pcs
Door wedge brown		10pcs
Door wedge white		10pcs

Waste paper basket coloured		30pcs
-----------------------------	--	-------

GROHE



EUPHORIA SHOWER
WALL MOUNTED



INFRA RED BASIN TAP



TECTRA INFRA RED
FOR URINAL



EUROCUBE SINGLE LEVER



PILLAR TAP EUROECO



BAULOOP BATH MIXER



COSMO WALL PLATE



ACCESSORY SET



CONCEALED BODY





For More Information Telephone +254 20 6969000,
+254 732 888820 Email marketing@apex-steel.com